

SAMSUNG Wi-Fi

Shifting K12 Technology into High Gear

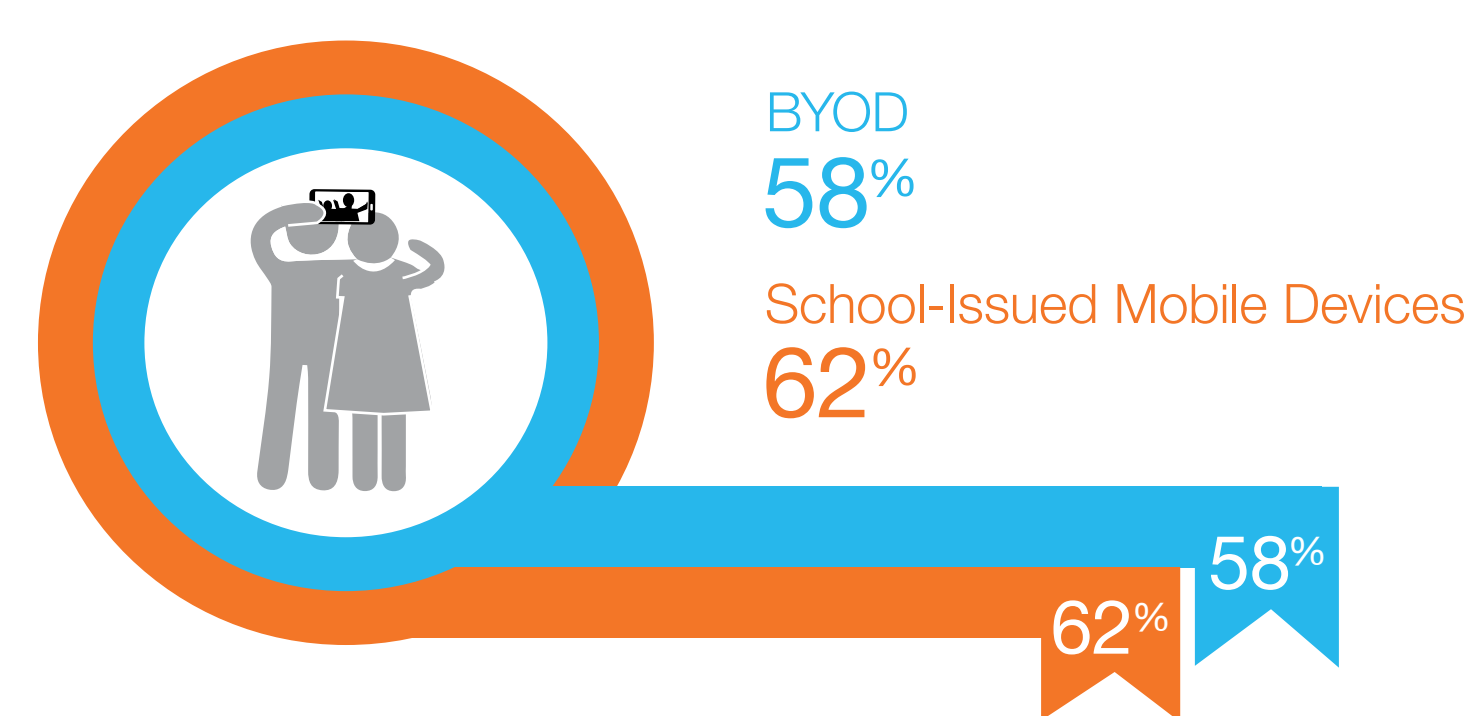


Digital Innovation is Building Better K12 Infrastructure for Tomorrow

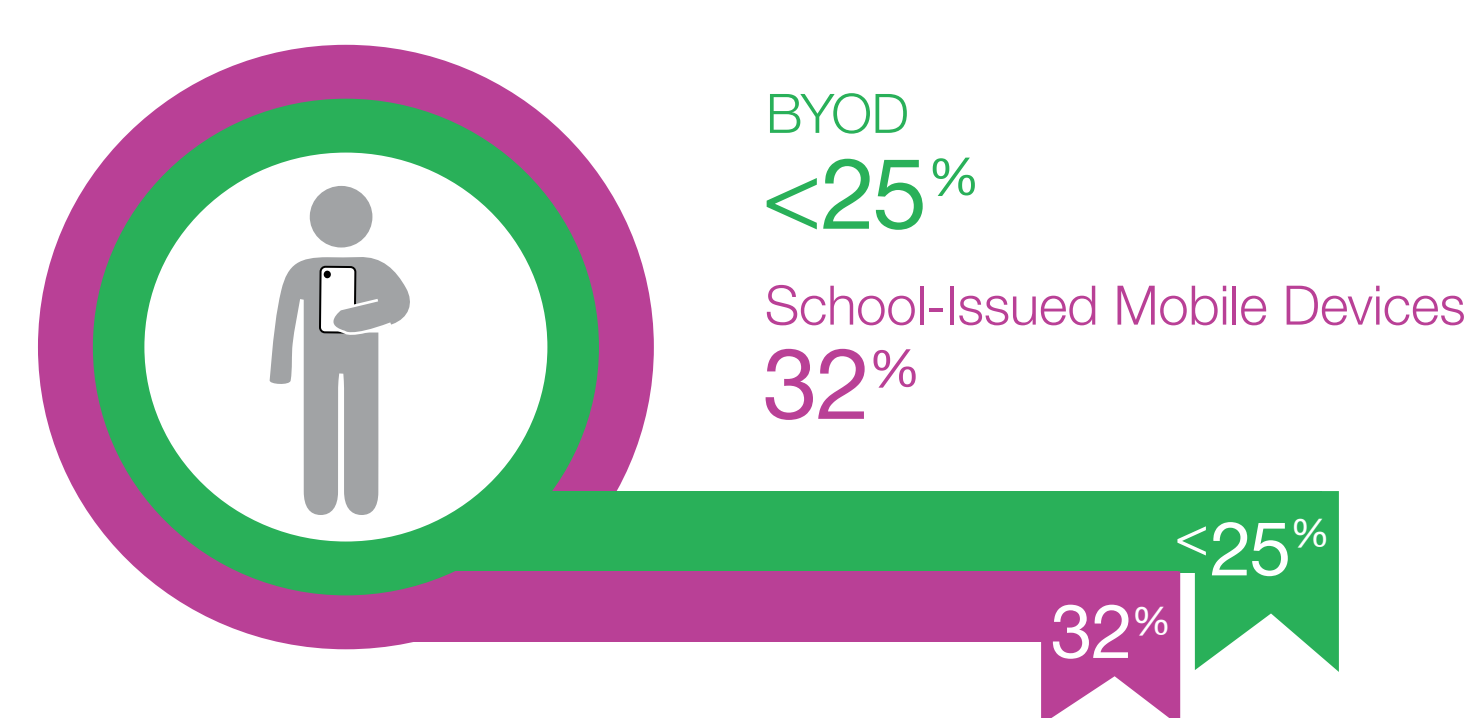


Wi-Fi Access Enables BYOD and 1:1 Adoption

High Schoolers



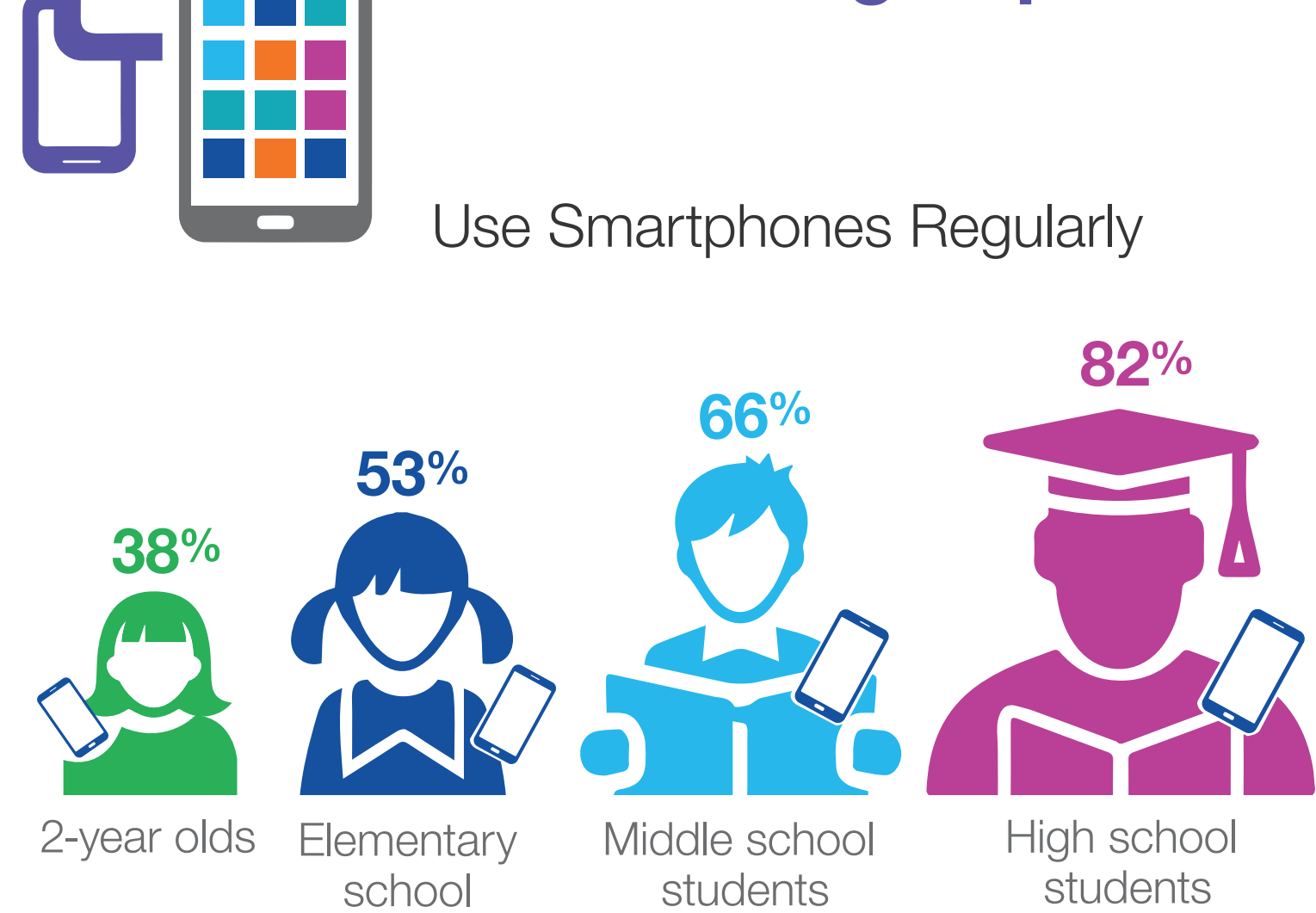
Middle Schoolers



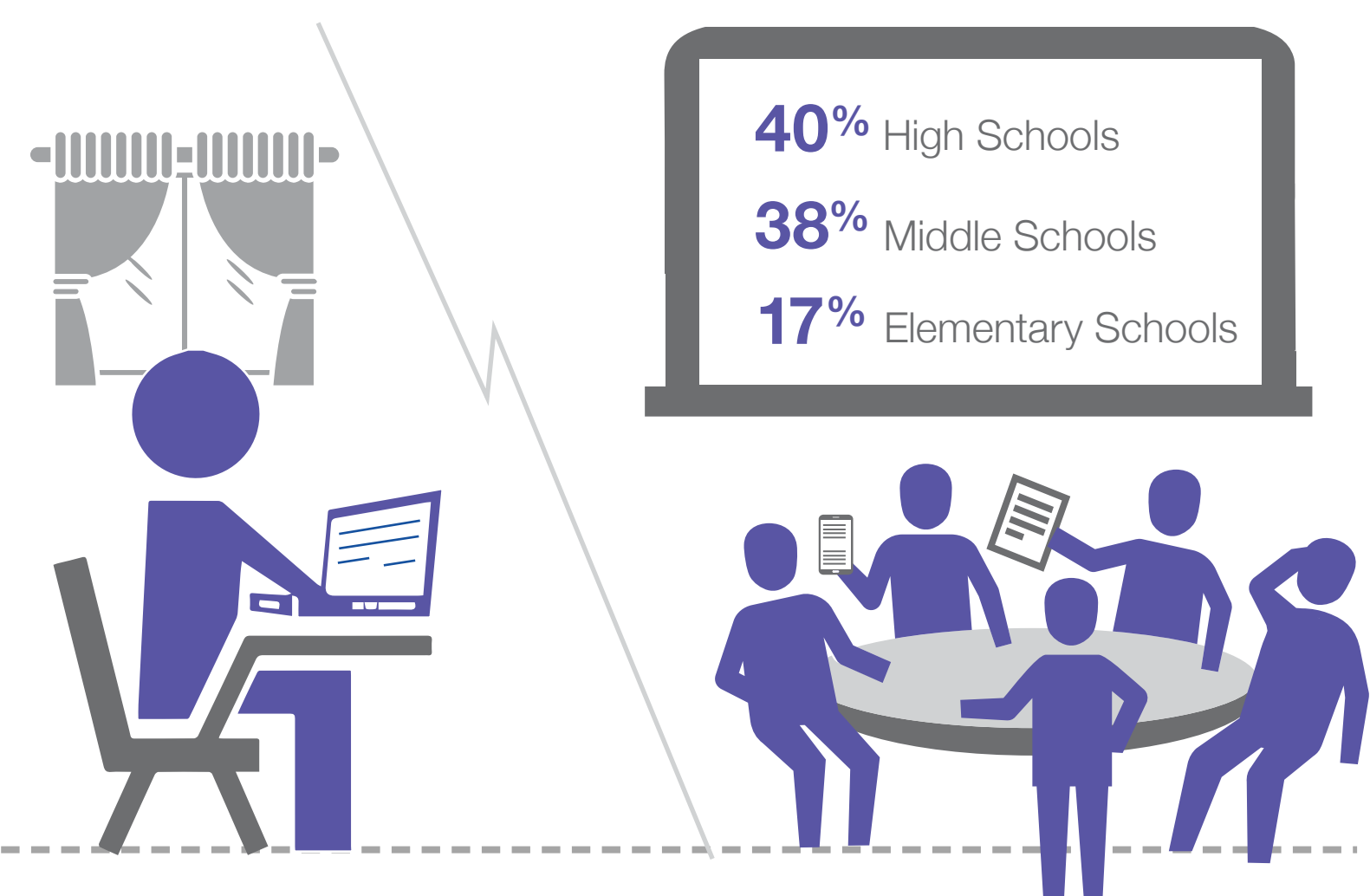
Gamification is Re-shaping Learning



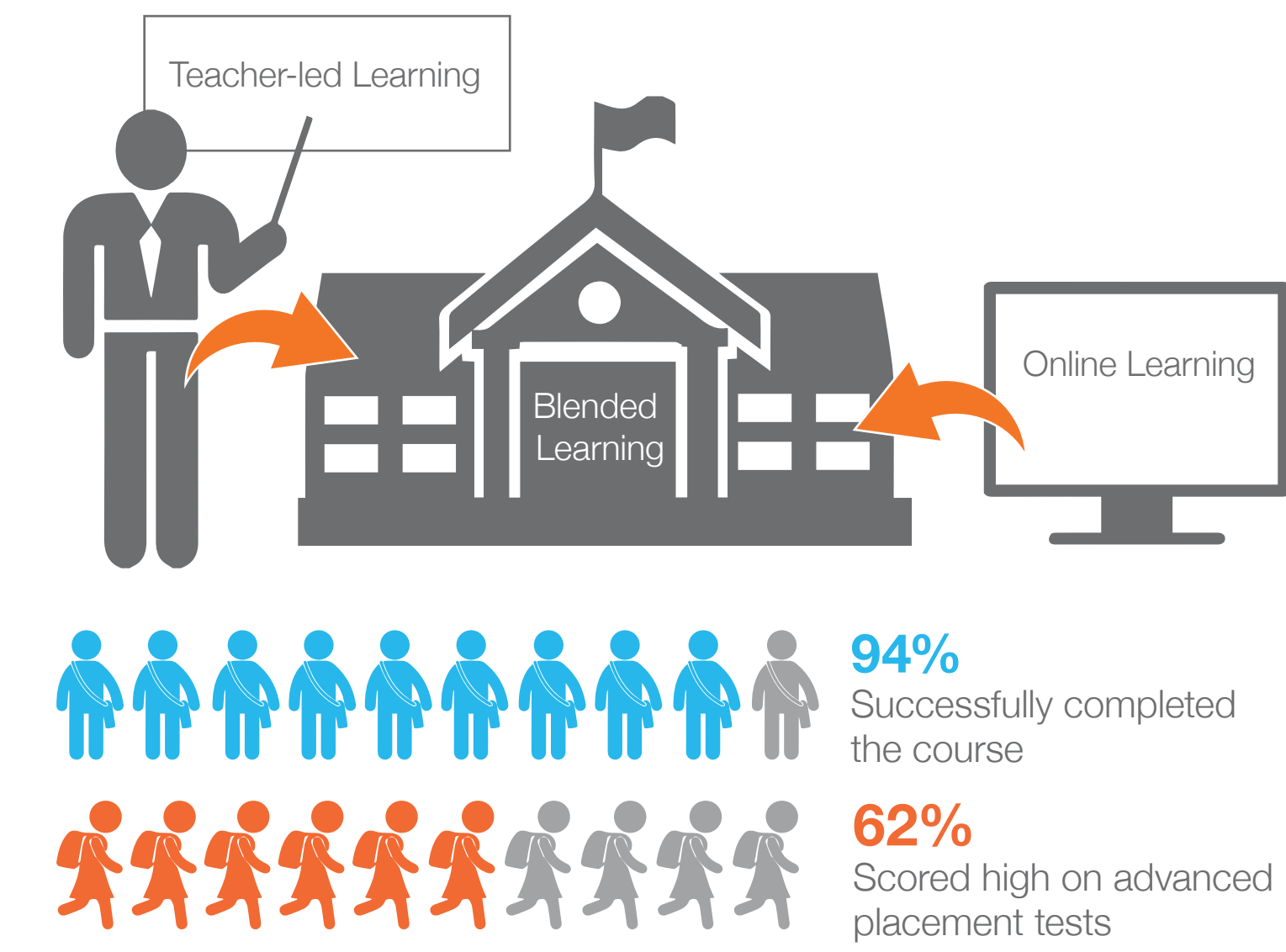
Mobile Devices and Wi-Fi are Transforming the Learning Experience



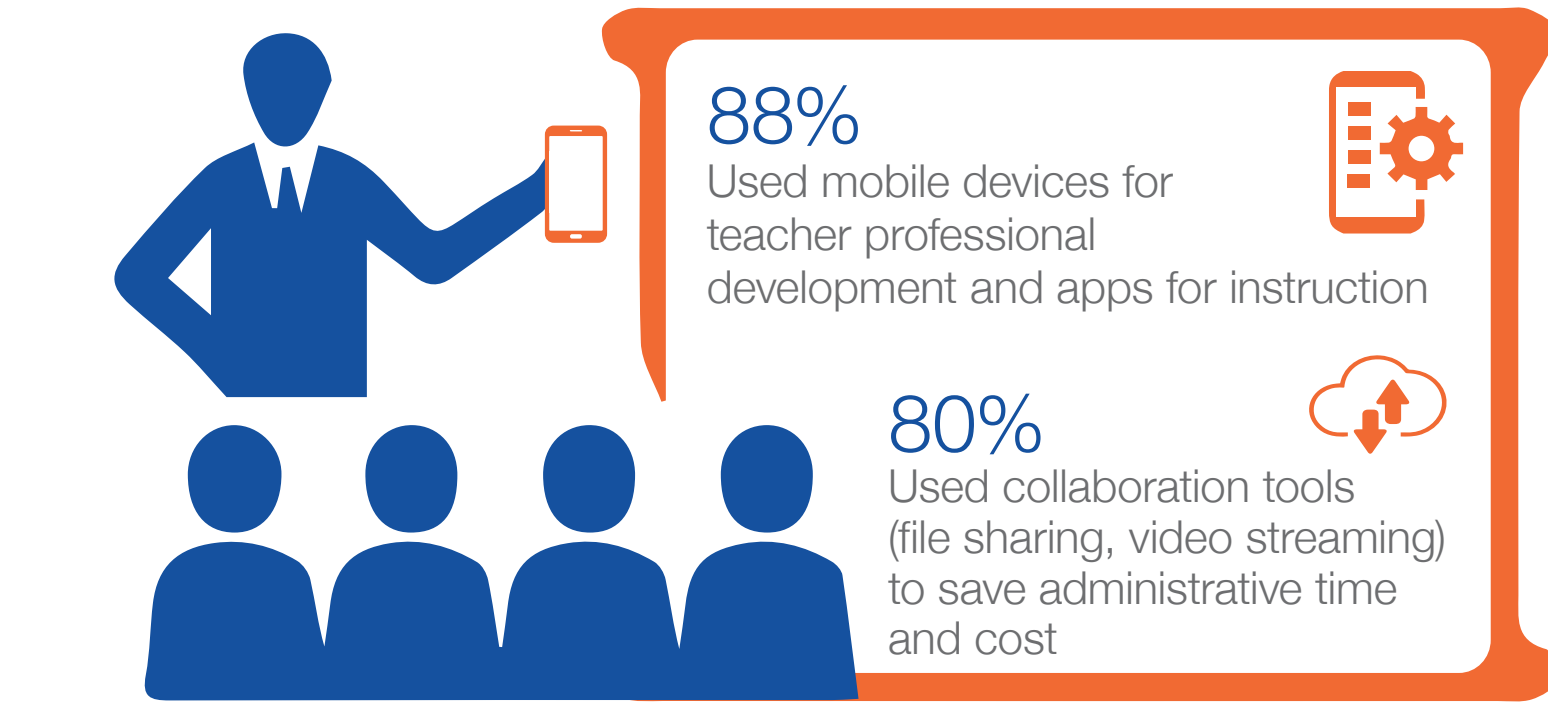
Implemented Flipped Learning with "Positive Results"



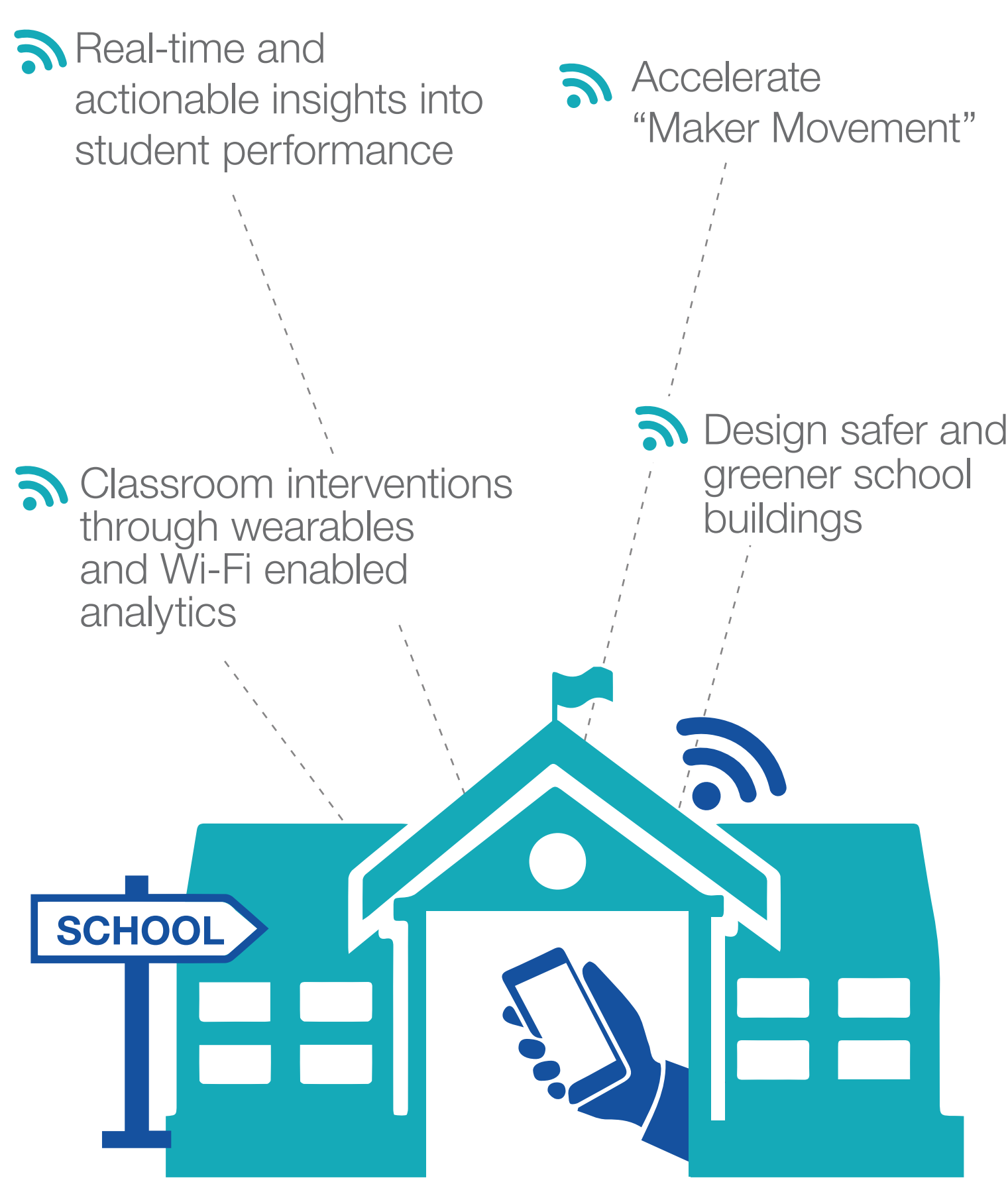
Blended Learning is Narrowing the Achievement Gap



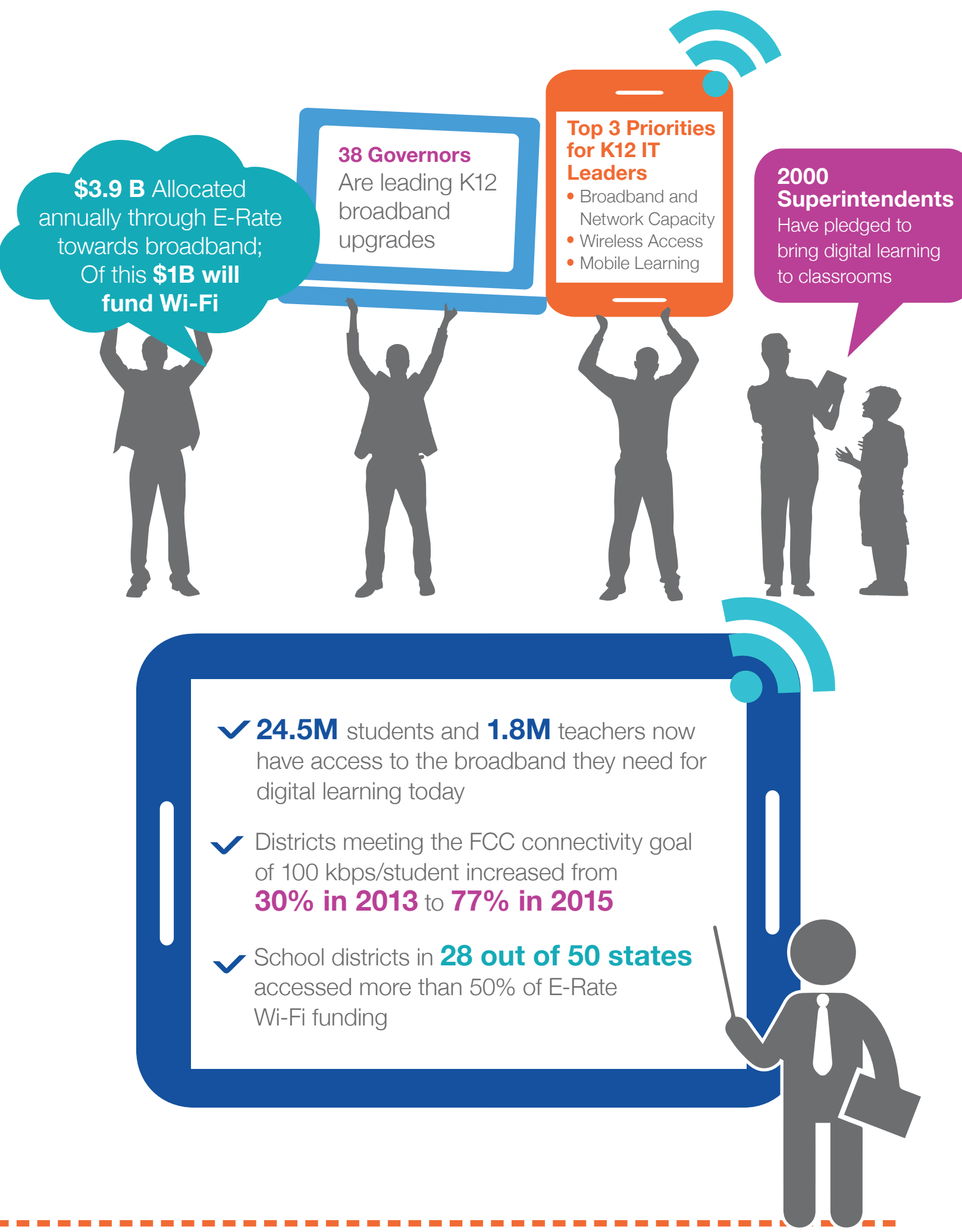
Districts Accelerated Professional Development and Collaboration



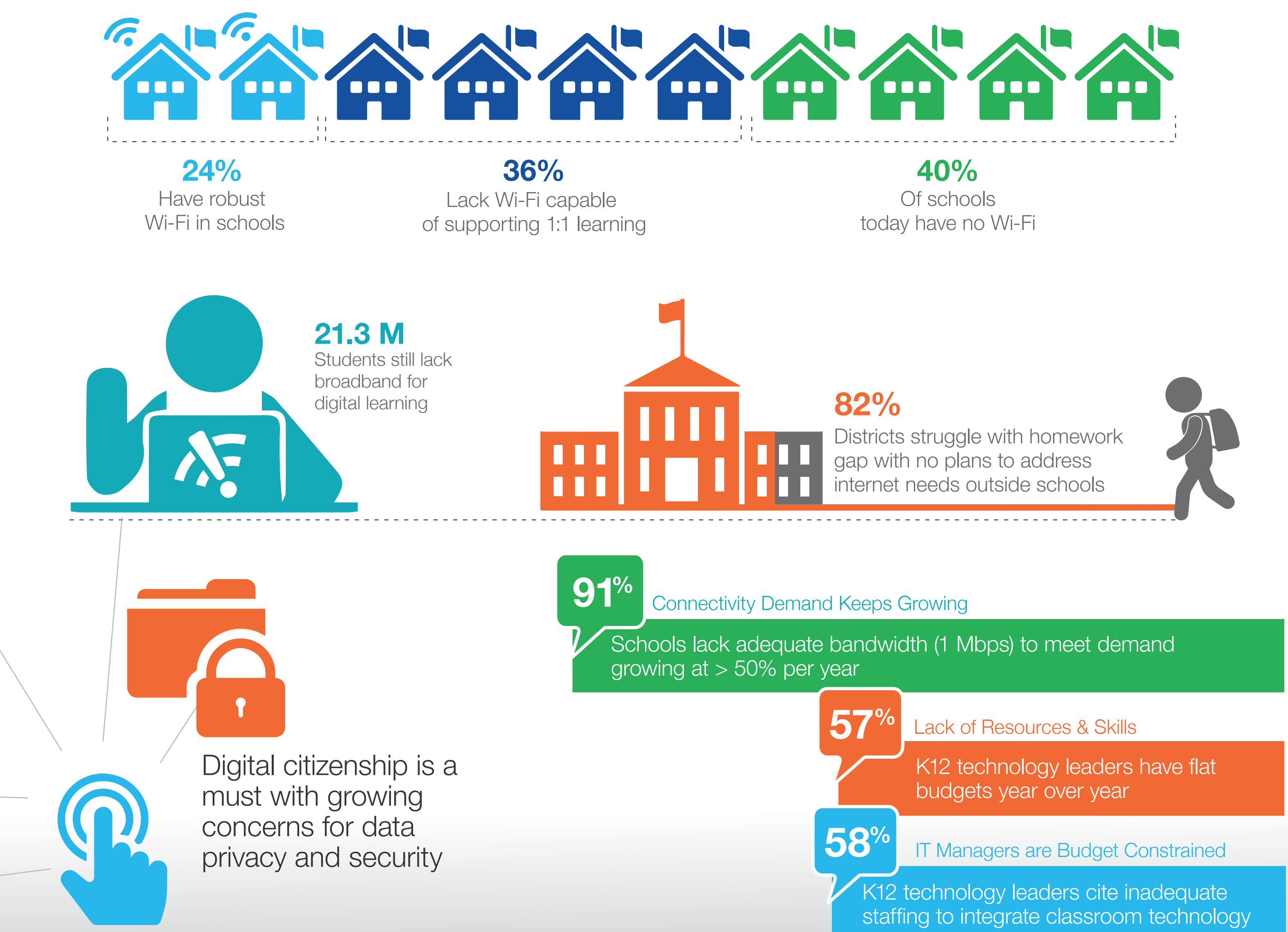
"Access" and "Smart Use" Enabled by IOT and Ubiquitous Wi-Fi



Multiple Forces Converging to Close the K12 Connectivity Gap



Challenges Faced by School Districts that Want to be Future Ready



Sources
 [1] Atlantic Computing Technology Corporation, [2] Center for Digital Education, [3] Common Sense Media, [4] Consortium for School Networking, [5] EducationSuperHighway, [6] Education Week, [7] Future Ready Schools, [8] Geektime, [9] Harris Poll on behalf of Pearson, [10] Method Public Schools, [11] Project Tomorrow, Speak Up, [12] Summit of the Federation of American Scientists, [13] The eLearning Industry's Network, [14] THE Journal

*Open Educational Resources

Elevate The Classroom Experience with Secure, High Performance Samsung Wi-Fi

Inspiring Students. Empowering Teachers. Simplifying IT.

Let us help you transform the wireless & communication infrastructure you have today into what you will need to address the challenges of tomorrow.

TRY IT NOW

www.samsung.com/wlan | we.info@samsung.com

